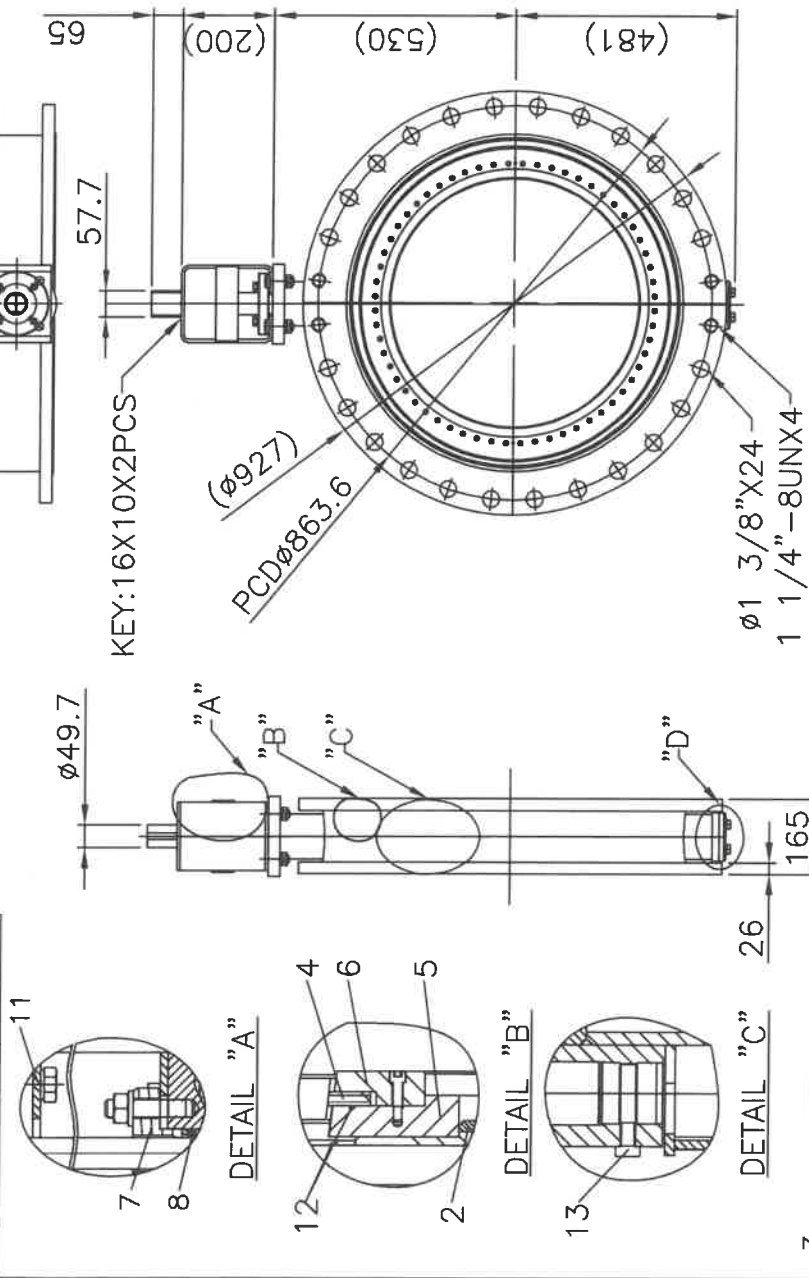


*Approved 5/29/24
Dawn Bennett*

REFER DIMENSIONS MACHINED DIMENSION	TOLERANCE
0-400	±2
400-800	±3
800	±4
REFER DIMENSIONS ASSEMBLY DIMENSION (ALL DIMENSION)	TOLERANCE
	±20



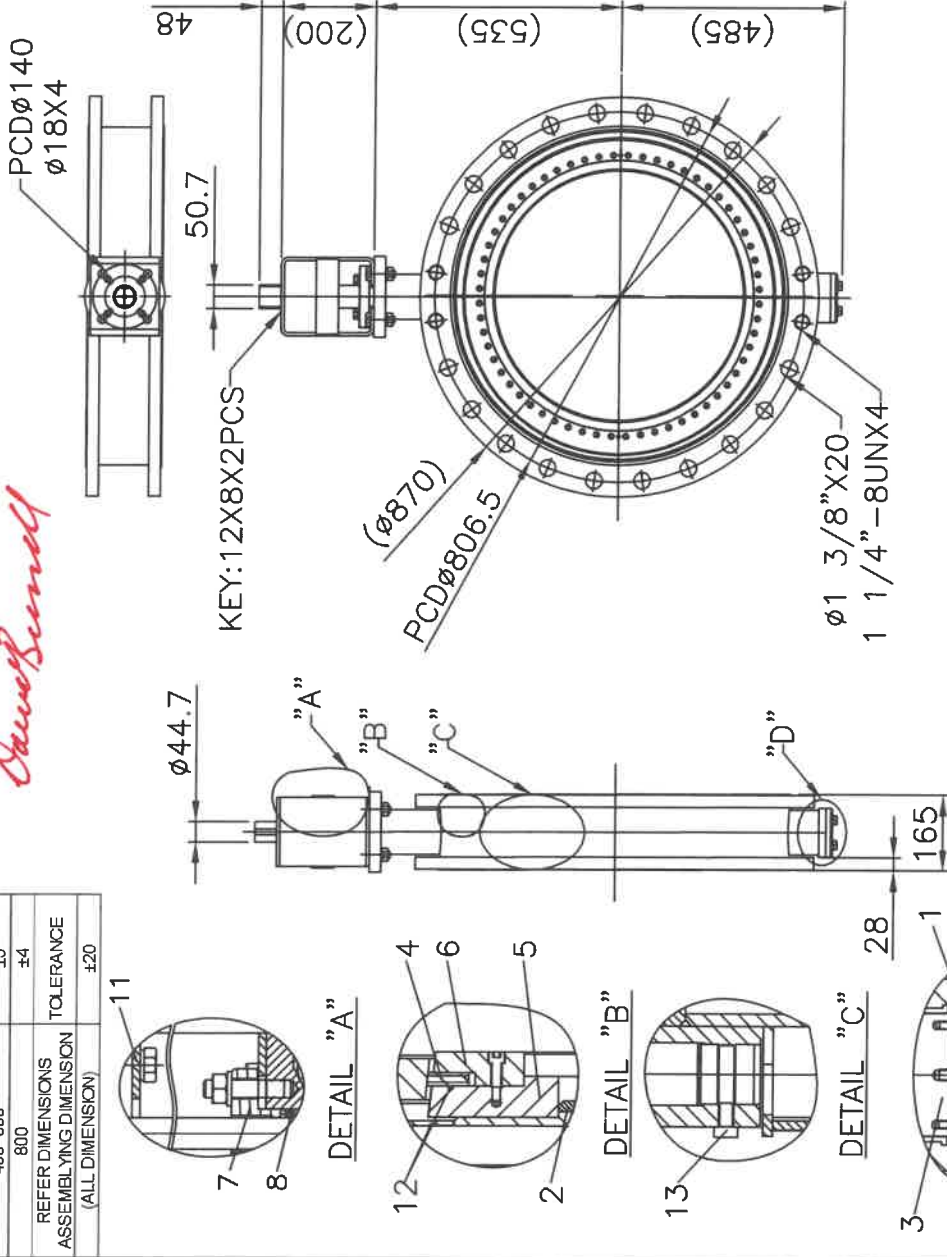
UNIT: MPa bar PSI Kg/cm²
 MAX WORKING PRESS
 SHELL TEST
 SEAT TEST
 TEST FLUID

ITEM NO.	PART NAME	QTY	MATERIAL
13	BOLT	2	ASTM A194 8
12	GASKET	1	GRAPHITE
11	YOKE	1	ASTM A240 316
10	BOTTOM PACKING	1	GRAPHITE
9	BOTTOM COVER	1	ASTM A240 316
8	GLAND PACKING	1	GRAPHITE
7	GLAND	1	ASTM A351 CF8M
6	BODY RETAINER	1	ASTM A240 316
5	DISC RETAINER	1	ASTM A240 316
4	SEAT	1	ASTM A240 316+GRAPHITE
3	SHAFT	2	ASTM A182 F316
2	DISC	1	ASTM A240 316
1	BODY	1	ASTM A240 316

	Butterfly Valves & Controls Inc 671 Industrial Blvd Grapevine, Texas 76051		DESN BY POCKY 2024.05.23	CHK BY XIANG 2024.05.23	AUTH BY STONE 2024.05.23	ISSUE DATE 2024.05.23	MATERIAL 	SCALE 1/15	UNIT mm	SIZE A4	DRAWING NO D393070N01-EX	REV 0
	28 in VF-393 DAMPER VALVE						ASME B16.47 CLASS 150 SERIES A					

REFER DIMENSIONS MACHINED DIMENSION	TOLERANCE
0-400	±2
400-800	±3
800	±4
REFER DIMENSIONS ASSEMBLY DIMENSION (ALL DIMENSION)	TOLERANCE
	±20

*Approved 5/19/24
David Samuel*



NOTES:
 Valve torque requirement 957 Nm at 2 psig
 80 psig air required
 Top mounting pad approx temp 100C
 Air to open, Spring to close

UNIT: MPa bar PSI Kg/cm²
 MAX WORKING PRESS
 SHELL TEST
 SEAT TEST
 TEST FLUID

ITEM NO.	PART NAME	QTY	MATERIAL
13	BOLT	2	ASTMA194 8
12	GASKET	1	GRAPHITE
11	YOKE	1	ASTMA240 316
10	BOTTOM PACKING	1	GRAPHITE
9	BOTTOM COVER	1	ASTMA240 316
8	GLAND PACKING	1	GRAPHITE
7	GLAND	1	ASTMA351 CF8M
6	BODY RETAINER	1	ASTMA240 316
5	DISC RETAINER	1	ASTMA240 316
4	SEAT	1	ASTMA240 316+GRAPHITE
3	SHAFT	2	ASTMA182 F316
2	DISC	1	ASTMA240 316
1	BODY	1	ASTMA240 316

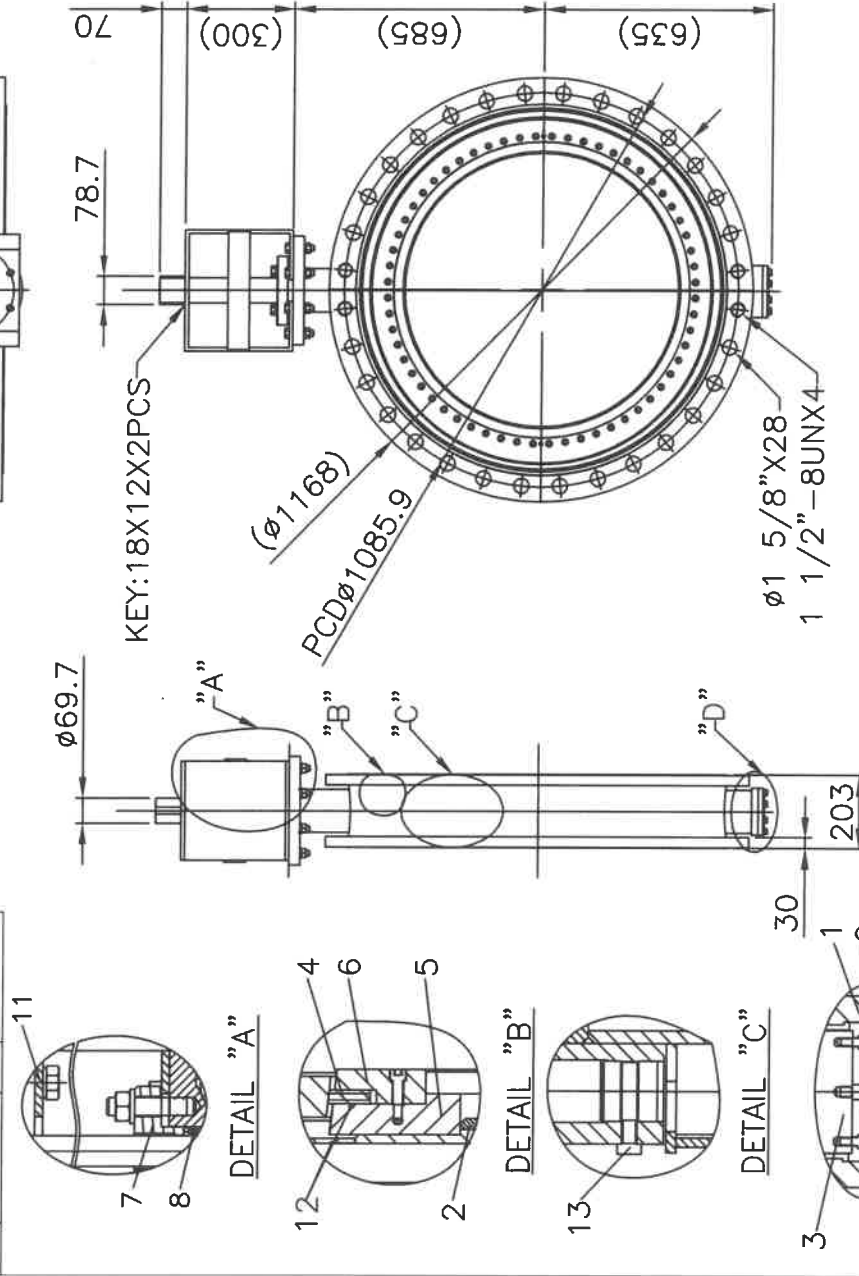
	DESIGN BY	CHK BY	AUTH BY	ISSUE DATE	2024.05.15
	POCKY XIANG STONE				MATERIAL
2024.05.15 2024.05.15 2024.05.15				SCALE	1/15
				UNIT	MM
Butterfly Valves & Controls Inc. 671 Industrial Blvd. Grapevine, Texas 76051				DRAWING NO	D393065N01-EX
				REV	0

REFER DIMENSIONS MACHINED DIMENSION	TOLERANCE
0-400	±2
400-800	±3
800	±4
REFER DIMENSIONS ASSEMBLY DIMENSION (ALL DIMENSION)	TOLERANCE
	±20

*Approved 5/29/24
Edward Samuel*

NOTES:

Valve torque requirement 2256 Nm at 2 psig including 30% SF
80 psig air required
Top mounting pad approx temp 100C
Air to open, Spring to close



UNIT: MPa bar PSI Kg/cm²
MAX WORKING PRESS
SHELL TEST
SEAT TEST
TEST FLUID

ITEM NO.	PART NAME	Q'TY	MATERIAL
13	BOLT	2	ASTMA194 8
12	GASKET	1	GRAPHITE
11	YOKE	1	ASTMA240 316
10	BOTTOM PACKING	1	GRAPHITE
9	BOTTOM COVER	1	ASTMA240 316
8	GLAND PACKING	1	GRAPHITE
7	GLAND	1	ASTMA351 CF8M
6	BODY RETAINER	1	ASTMA240 316
5	DISC RETAINER	1	ASTMA240 316
4	SEAT	1	ASTMA240 316+GRAPHITE
3	SHAFT	2	ASTMA182 F316
2	DISC	1	ASTMA240 316
1	BODY	1	ASTMA240 316

Butterfly Valves & Controls Inc 671 Industrial Blvd Grapevine, Texas 76051	DESIGN BY	CHK BY	AUTH BY	ISSUE DATE	2024.05.15
	POCKY	XIANG	STONE	MATERIAL	
				SCALE	1/19
				UNIT	MM



Butterfly Valves & Controls Inc

671 Industrial Blvd
Grapevine, Texas 76051

VF-393 DAMPER VALVE	36 IN BARE SHAFT
ASME B16.47 CLASS 150 SERIES A	DRAWING NO D393090N01-EX
SIZE A4	REV 0