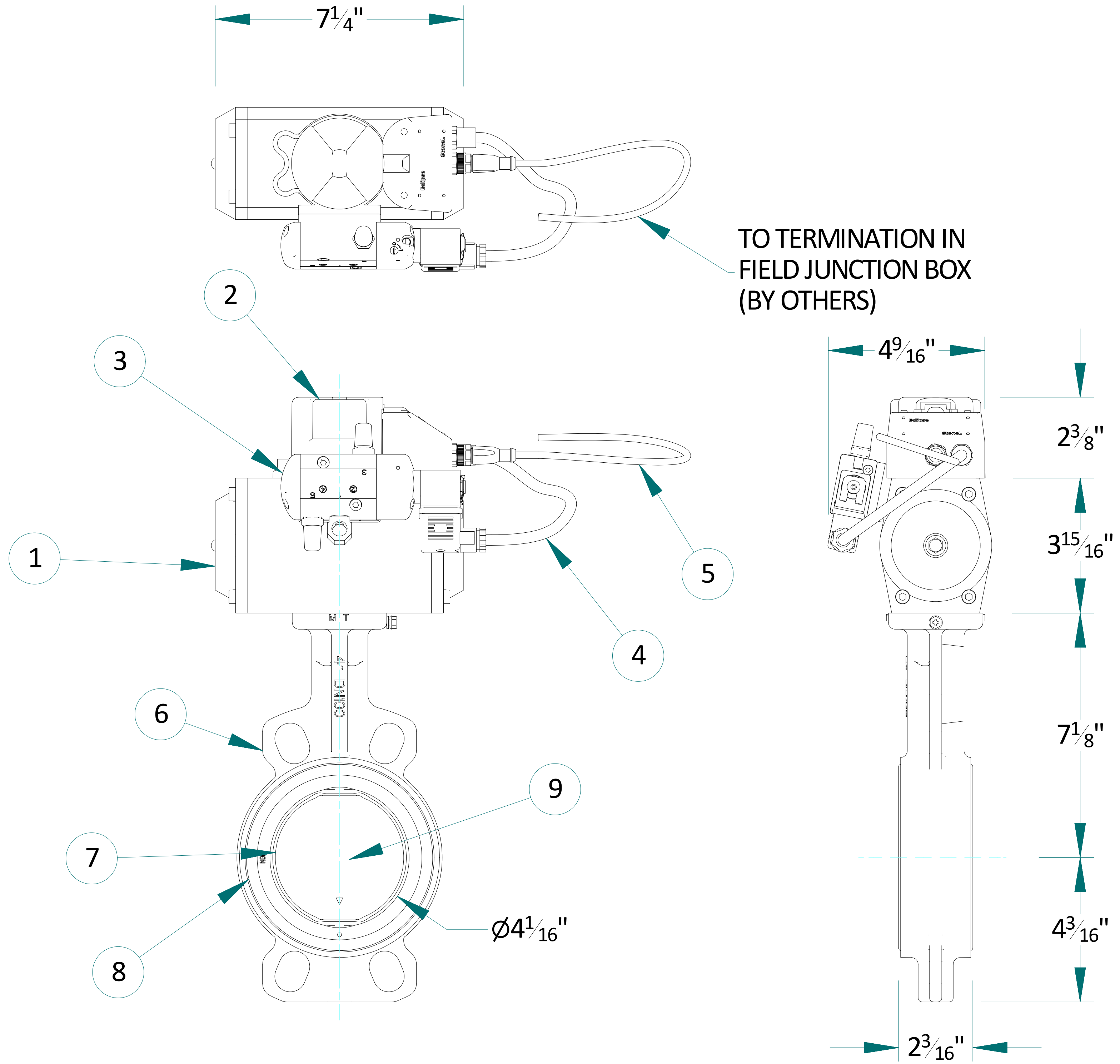
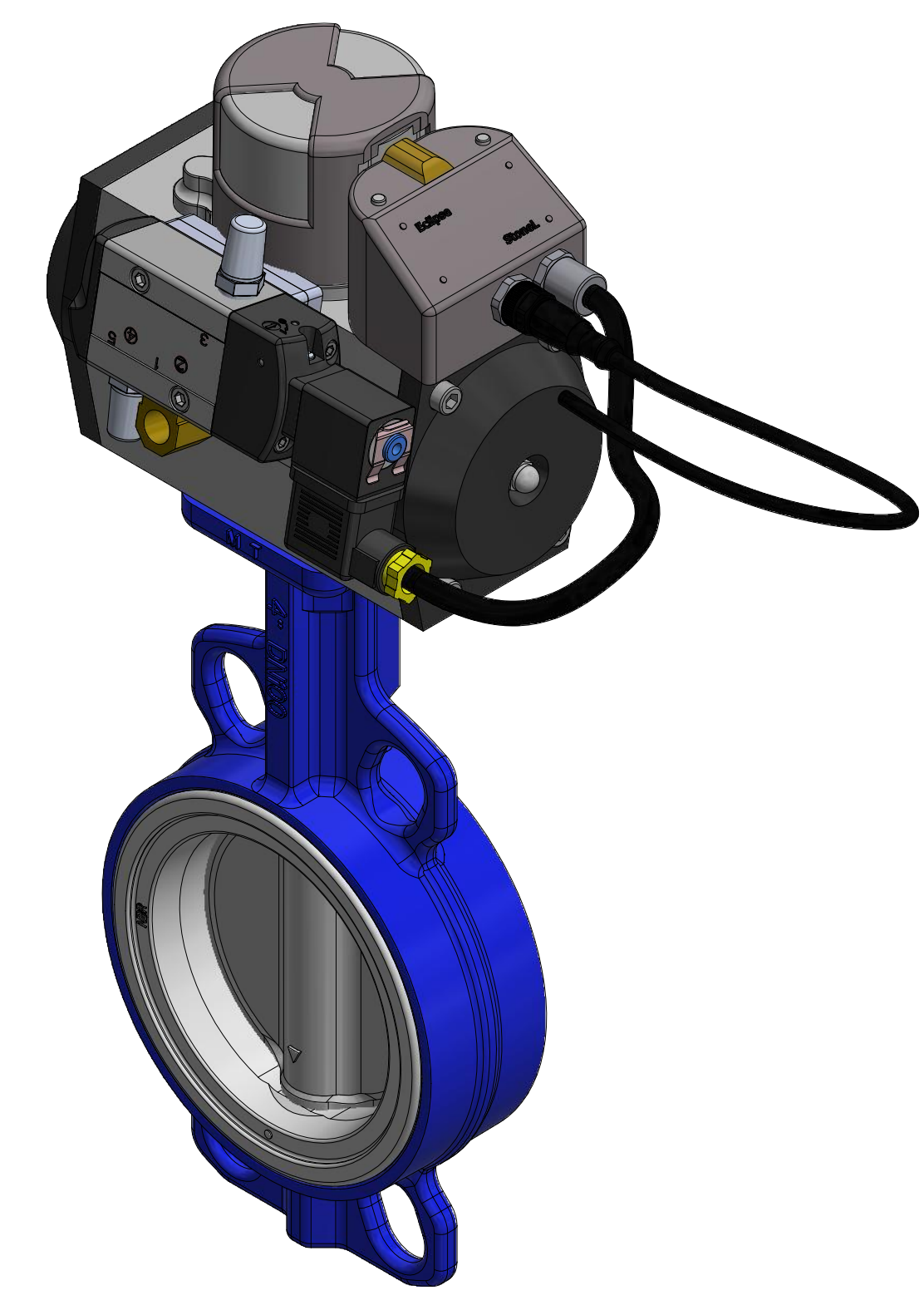


FLOW #	TAG #	SOLENOID ENERGIZED
1.02	XCV1054	TO OPEN
1.10	XCV9110	TO OPEN
1.11	XCV9015	TO CLOSED
1.11	XCV9115	TO CLOSED
3.02	XCV2054	TO OPEN
3.10	XCV9210	TO OPEN
3.11	XCV9215	TO CLOSED

- 8 - BTM SW C > CLOSED
- 7 - BTM SW NC > CLOSED
- 6 - TOP SW C > OPEN
- 5 - TOP SW NC > OPEN
- 4 - SOL PWR 2
- 3 - SOL PWR 1
- 2 - SOL 2
- 1 - SOL 1



TO TERMINATION IN
FIELD JUNCTION BOX
(BY OTHERS)



COMPONENT LIST			
ITEM	QTY	DESCRIPTION	PART NUMBER
1	1	ACTUATOR	RPB50DA
2	1	LIMIT SWITCH	STONEL ECLIPSE EG EG33P26DM-MMM05, 24VDC
3	1	SOLENOID VALVE	ASCO SC8551A001MS 24/DC
4	1	ELECTRICAL CONNECTOR	ASCO 290414-001
5	1	M12 MOLDED CHORDSET	WOODHEAD 1200650523, 5 PIN, MALE, 6.5'
6	1	BODY	PAINTED CAST IRON
7	1	DISC	316 STAINLESS STEEL
8	1	SEAT	WHITE EPT, FOOD GRADE
9	1	STEM	316 STAINLESS STEEL

NOTES:
1. ALL DIMENSIONS ARE IN INCHES UNLESS NOTED OTHERWISE
2. APPROX. WEIGHT: 20 LBS

APPROVAL REQUIRED
APPROVED AS SHOWN
RE-EXAMINE DRAWINGS FOR APPROVAL
THIS JOB IS AN INDIVIDUAL MAC COMPANY RECEIVES ONE SHARD COPY OF EACH APPROVAL SHEET
CUSTOMER SIGNATURE